

EMMAUS SCHOOL TRAVEL PLAN

November 2006

DFES Number 865 / 6032

Contents

1.	Introduction	Page 3
2.	Consultation	Page 4
3.	Survey Results	Page 5/6/7
4.	Travel Survey – A Summary	Page 8
5.	Identified Safety Hazards for Pupils	Page 9
6.	Travel Plan agreement	Page 10
Appendix 1	: Proposed Extension and Alterations at Emmaus School	
Appendix 2	: Planned Targets & Objectives	
Appendix 3	: Persimmon Homes link road planning application	
Appendix 4	: Senior Class cycle routes	
Appendix 5	: Mini staff and volunteer transport survey	
Appendix 6	: Pictures of current car park and pavements	

INTRODUCTION

This document has been formed to provide the foundations on which the Governors and Staff at Emmaus School can provide a means of effectively addressing the health and environmental issues concerning its pupils. In addition to this, we have been granted planning permission to enable us to take more pupils than at present.

Situated just off the A350 in Staverton, Emmaus school is a small privately run Christian school which opened in September 1997. Since that time there has been a steady growth in the number of children which has enabled us to build firm educational, pastoral and disciplinary foundations. Currently we have a waiting list for pupils to start in the next 4 academic years and the current pupil number is fast outgrowing the present accommodation. Providing education from reception (age 5) through to year 11 (age 16), our current pupil number stands at 45 and will grow to 47 in January of 2007. We started with just 3.

Presently, the accommodation consists of a classroom, hall, toilets and science laboratory in the main building, as well as a portable building adjacent to the main school building. This provides cramped classroom areas for both the junior and senior classes. Outside, there are gardens, a car park and two play areas, one with a netball court. There is also a games field nearby, which the School has permission to use, although the existing arrangements will shortly be up for review.

We need to replace the two classrooms currently housed in the portacabin, and need additional classes for other lessons such as chemistry, French, Spanish, Latin and music. A changing room for both male and female students is also needed along with an office for support/admin staff.

Presently, the majority of pupils and staff access the school via car-sharing and use the car-park provided for staff, visitors and parents alike. This can accommodate 8 cars at any one time although this would 'block' 5 cars in. (See picture 1, appendix 6). The blocked spaces are usually taken by staff who arrive first and leave last. There are currently 5 pupils who we can guarantee walk to and from school on a daily basis (4 from the Marina end and 1 from Hilperton). *Already a rise since the survey back in May.* On other occasions another 2 pupils do a combination of walk and bus rather than bring the car.

CONSULTATION

The **School Travel Plan Advisor** for Wiltshire has been consulted for guidance and advice and has visited the school on two occasions to assist in the drafting of this document.

100% of pupils took part in the Youngtranset service survey in May 2006. Their parents were consulted via letter regarding parking issues several times between May and November of 2006.

We have done a mini-travel survey for **Staff**. On analysis, it was discovered that apart from 3 members who are part-time, all staff were in fact lift-sharing with students either to or from, or both to and from the premises at the beginning or end of the day. We have included the results of this mini survey in Appendix 5 for your information.

The **senior pupils** also got involved. During November 2006, using local maps as part of a geography class, they discussed ways in which those living in walking or cycling distance from the school could do so. They were then asked to take their finding home to discuss the options with their parents. (See appendix 4).

On reviewing the location of pupils, the travel plan committee felt that a walking bus scheme was not relevant for Emmaus. Most of the pupils were forced to drive to school because of the distances travelled.

Staverton Parish council has been consulted and were able to advise us of the plans for the pedestrian crossing as part of the planning permission granted to Persimmon Homes. This is for the link road between the Staverton Marina and the B3105. A copy of this can be seen in Appendix 3. This was extremely welcome news for both ourselves and **Staverton Primary** who we have also been liaising with regarding our plans for more sustainable travel.

The travel plan committee consists of:

Miriam Wiltshire – Head teacher, Tracey-Anne Walter, - Administrator, Catrin Alsop – Governor, Sue Jarvis – Parent & Paul Oliver – Teacher/Parent.

SURVEY RESULTS

Response rate = 100%

How do you usually travel to school?

Walk = 3% (1)
Cycle = 3% (1)
Train = 3% (1)
Car = 29% (12)
Car share with other classmates = 61% (26)

If you had the choice, how would you like to travel to school?

Walk = 10% (4)
Cycle = 32% (13)
School bus = 3% (1)
Car = 16% (7)
Car share with other classmates = 39% (16)

Who do you usually travel to school with?

On your own = 3% (1)
With an adult = 23% (9)
With other children = 3% (1)
With adults and other children = 71% (29)

How do you usually travel from school?

Cycle = 6% (2)
Train = 3% (1)
Car = 23% (9)
Car share with other classmates = 68% (27)

If you had the choice, how would you like to travel from school?

Walk = 6% (2)
Cycle = 26% (11)
School bus = 3% (1)
Other bus = 6% (2)
Car = 13% (4)
Car share with other classmates = 45% (18)

Who do you usually travel from school with?

On your own = 3% (1)
With an adult = 13% (5)
With other children = 6% (2)
With adults and other children = 77% (31)
Do your parents/carers own a car?

Yes, one = 39% (16)
Yes two or more = 61% (25.01)

Do you own a bicycle?

Yes = 94% (39)
No = 6% (2)

Do you have a bus or train pass?

Yes = 6% (2)
No = 94% (39)

What would make walking to school better, or encourage you to walk?

Wider pavements = 74% (30)
Cleaner pavements = 14% (5.74)
Better lighting = 12% (5)

What would making cycling to school better, or encourage you to cycle?

More cycle lanes = 58% (24)
Less traffic = 23% (9)
Slower traffic = 19% (8)

What would make going to school by bus or train better, or encourage you to?

A bus stop closer to home = 67% (27)
A bus stop close to school = 17% (7)
Buses running more often = 17% (7)

How far is it from home to school by the route you normally use?

Between 2 km and 3 km = 16% (7)
Between 3 km and 5 km = 16% (7)
More than 5 km = 68% (28)

The above survey was completed using the **Youngtraset service** on the web. This was the first of its kind for Emmaus. The survey clearly shows that our catchment is not tight. No children live nearer than 2 km. 16% live 2-3 km away, 16% live 3-5 km away and 68% live more than 5 km away. 1 child walks, 1 cycles, 1 comes by train and the remainder come by car, 19 of which share. All families own a car and 68% of children come from families with two or more cars. All but two children have bikes. 10 children would like to cycle to school and 8 would like to cycle home. 4 of these children are 12 years or over in age. Most children come with other adults or children. All children said that wider pavements would improve walking and that cycle lanes would improve cycling. 12 children quoted "less traffic" and 10 "slower traffic". Under "ideas to improve public transport", all quoted a bus stop closer to home, 8 mentioned a bus stop closer to school* and 7 said buses running more often.

**** It should be noted that although there are in fact bus stops near to the school, there would always be the issue of crossing the B3105. When investigating this options with some of the parents concerned, this stopped them from allowing their children to use this mode of transport without adult supervision.***

EMMAUS TRAVEL SURVEY – A SUMMARY

Emmaus school has undertaken the writing of this travel plan in order to put in place effective travel structures for both staff and pupils, thus eliminating any unnecessary travel/polution issues.

The overall impression gained on reviewing the Emmaus Survey is that parents who live more than 5km from the school (68%) are currently doing everything possible to ensure that the least amount of vehicles are used. There is a good level of car-sharing. However, it also highlights the fact that were there more cycle routes and wider pavements available (see picture 2 – appendix 6), the majority of the seniors and a small percentage of the junior class could in fact consider cycling or walking as an option. The general consensus is that the traffic level is much too high and too fast to allow this in the present circumstances. Some children have actually been moved closer to the school in order to allow them to walk the distance twice daily. There is good parental committment to a healthier and more environmentally friendly choice.

In view of the fact that Emmaus shares an access road with Staverton Primary School, our school times were moved to 8.45am and 3pm in order to aleviate any unneccesary congestion. This has, for the majority of time worked very well. However, there are times when school lane is conjested with traffic from both schools and also Nestlings playgroup situated between the two.

We have requested that parents use the Staverton Club car park wherever possible. However, very few are able to do this because they consider the crossing of the B3105 to be a safety hazard due to the heavy, often speedy traffic.

The implementation of a walking to school on Wednesdays from the Kings Head car park was also discussed as a travel plan committee. However, due to the lack of pavements on the same side as the pub, parents and pupils would be forced to cross the road to access a pavement and then cross back again to access the school at the other end.

Whenever a new pupil starts Emmaus, the parents are automatically introduced to anyone living in the same area as them for the sole purpose of lift-sharing. This is done with parental permission and usually results in effective co-operation on the behalf of the parents involved. This has always been done as a matter of course and has usually been introduced by way of teacher to relevant parents. In the future however, we will endeavor to introduce more effective opportunities for parents to be aware of need or availability (notice board, newsletter, etc.)

In October 2006 we gained a bursary from the CTC to train a member of staff to become a national standard cycling instructor. This will enable us to train all pupils (age 10 and up) to cycle safely to school and back where the distances allow. The cycling instructor course will take place in January and we hope to implement the training in the Spring of 2007.

IDENTIFIED SAFETY HAZARDS FOR PUPILS

The main hazards identified *indirectly* relate to the main road adjacent to the Emmaus School premises (B3105) and the minor road (School Lane) on which it lays. We have requested parents to avoid parking directly outside of the school premises unless absolutely necessary. However, in order to do this they have to cross an extremely busy road. At peak times there are often several cars either dropping children off at the Emmaus entrance, trying to access the nearby Staverton primary school and Nestlings playgroup. Although Emmaus parents have abided by our request to park as sensibly as possible in the car park places available, there are inevitable times when these spaces are already in use.

The remaining cars are forced to either park on the road immediately outside the gates or across the road. Whichever way they park, there is danger to the children and parents crossing the road to access the gates of Emmaus.

Within our aims and objectives we plan to investigate the cycle and bus routes for use by the pupils who are deemed old enough to use them. Our action plan has these items incorporated into it.

TRAVEL PLAN AGREEMENT

This agreement will be signed by representatives from the teaching staff, parents, governors and the Local Education Authority.

The school will carry out the school travel plan and develop and implement the measures identified in the action plan.

This travel plan has been accepted and endorsed by the following people:

Head teacher

Date:

Chairman of Govenors

Date:

**Director of Education
and Children (WCC)**

Date:

**Assistant Director of
Environmental Services (WCC)**

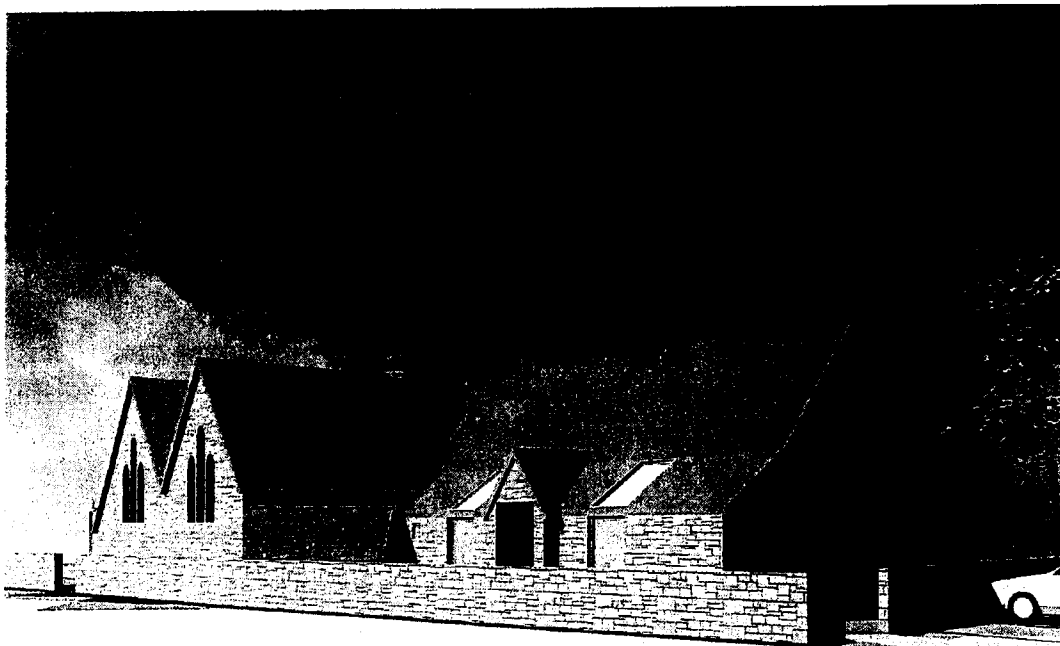
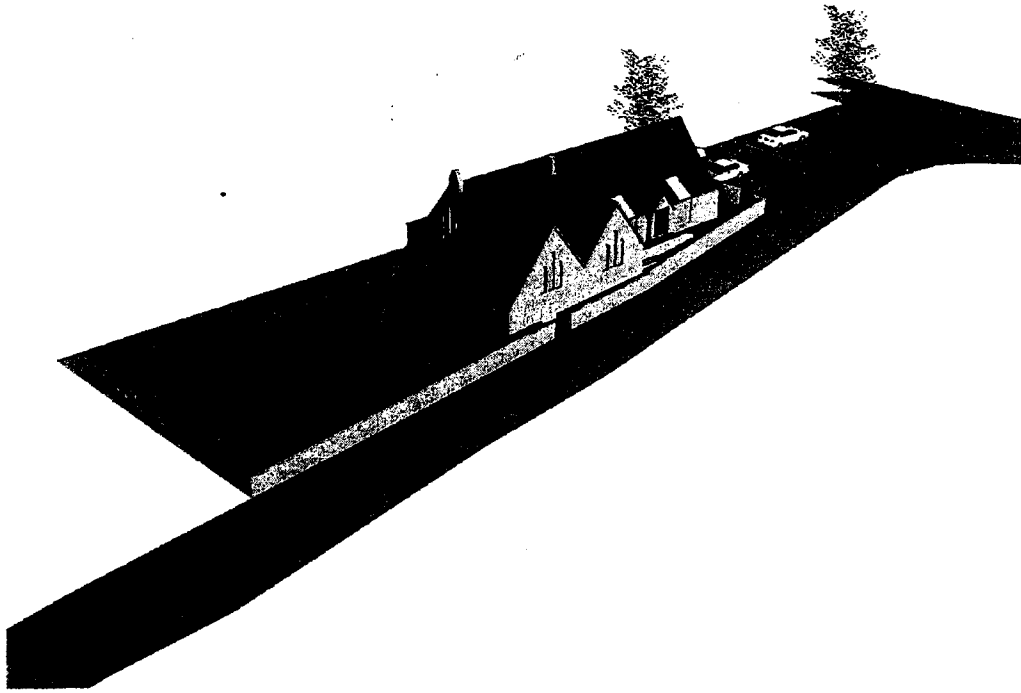
Date:

Parent Representative

Date:

APPENDIX 1

PROPOSED EXTENSION AND ALTERATIONS AT EMMAUS SCHOOL





APPENDIX 2

PLANNED TARGETS AND OBJECTIVES